



K008-3



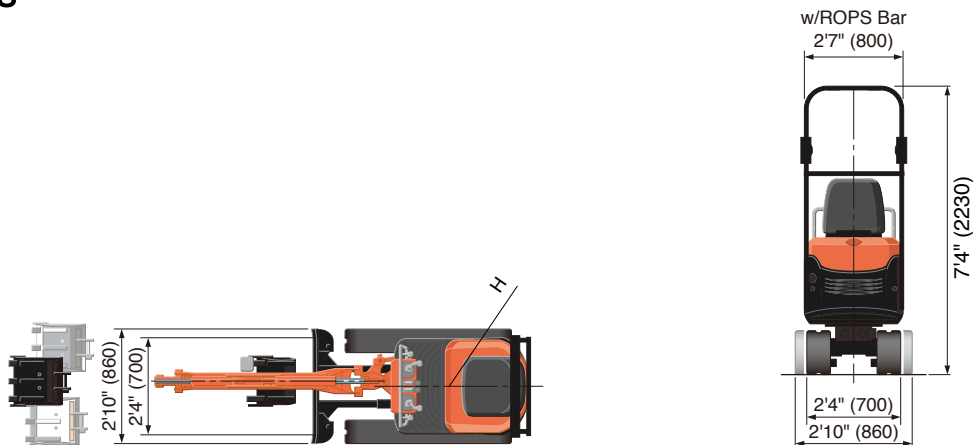
SPECIFICATIONS

Specifications

Model			K008-3	
Type of tracks			Rubber	
Engine	Model		Kubota D722-E4	
	Output (SAE J1995 gross)		HP (kW)/rpm	10.3 (7.7) / 2050
	Output (SAE J1349 net)		HP (kW)/rpm	10.1 (7.5) / 2050
	Displacement		cu.in. (cc)	44 (719)
Dimensions	Overall length		ft.in. (mm)	9'0" (2750)
	Overall height		ft.in. (mm)	7'4" (2230)
	Overall width		ft.in. (mm)	2'10" (860) / 2'4" (700)
	Min. ground clearance		in. (mm)	5.9" (150)
	Pump capacity		gpm. (ℓ /min)	5.55 (21.0)
Hydraulic system	Auxiliary hydraulic flow		gpm. (ℓ /min)	5.55 (21.0)
	Max. breakout force	Bucket	lbs. (kgf)	2200 (1000)
		Arm	lbs. (kgf)	1010 (460)
Drive system	Travel speed		mph (km/h)	1.2 / 2.5 (2.0 / 4.0)
	Max. traction force		lbs. (kgf)	1695 (770)
	Tumbler distance		ft.in. (mm)	2'11" (900)
	Crawler length		ft.in. (mm)	4'0" (1230)
	Shoe width		in. (mm)	7.1" (180)
	Ground contact pressure		psi (kgf/cm ²)	3.55 (0.25)
Swing system	Unit swing speed		rpm	8.3
	Boom swing angle	Left	degree	55
		Right	degree	60
Blade	Dimensions	Width	ft.in. (mm)	2'4" / 2'10" (700 / 860)
		Height	in. (mm)	7.9" (200)
	Max. lift above ground		in. (mm)	7.9" (200)
	Max. drop below ground		in. (mm)	7.1" (180)
	Hydraulic oil (reservoir/system)		gpm. (ℓ /min)	3.30 / 4.49 (12.5 / 17.0)
Fuel reservoir		gpm. (ℓ /min)	3.17 (12.0)	
Operating weight				
Including operator's weight 175 lbs.			lbs.(kgf)	2200 (1000)

The company reserves the right to change the above specifications without notice. This brochure is for descriptive purposes only. Please contact your local Kubota dealer for warranty information. For your safety, Kubota strongly recommends the use of a Rollover Protective Structure (ROPS) and seat belt for almost all applications.

DIMENSIONS





KX018-4



SPECIFICATIONS

Specifications

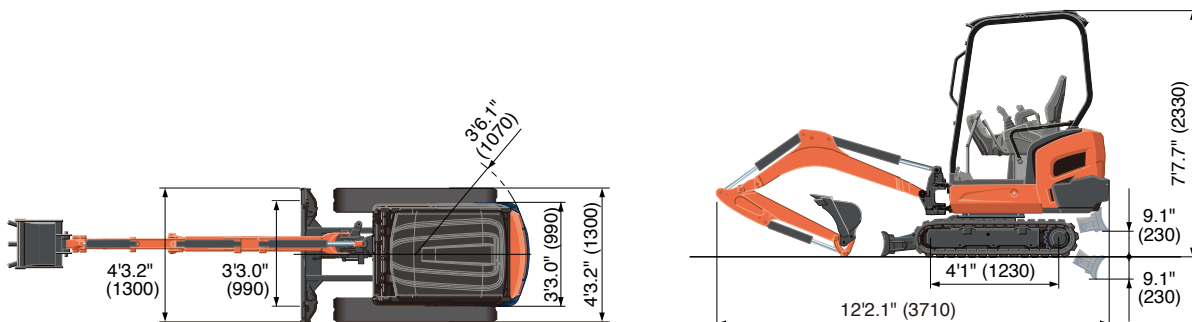
Model				KX018-4	
Type of ROPS / OPG (Top Guard Level I)*				Canopy / Cab	
Type of tracks				Rubber	
Engine	Model			Kubota D902-BH-E4	
	Output (SAE J1995 gross)		HP (kW)/rpm	16.1 (12.0) / 2300	
	Output (SAE J1349 net)		HP (kW)/rpm	15.5 (11.6) / 2300	
	Displacement		cu. in. (cc)	54.80 (898)	
Dimensions	Overall length		ft. in. (mm)	12'2.1" (3710)	
	Overall height		ft. in. (mm)	7'7.7" (2330) / 7'8.5" (2350)	
	Overall width		ft. in. (mm)	4'3.2" (1300) / 3'3.0" (990)	
	Min. ground clearance		in. (mm)	6.3" (160)	
Hydraulic system	Pump capacity		GPM (ℓ/min)	4.6 (17.3) × 2 / 2.8 (10.4) × 1 / 1.7 (6.2) × 1	
	Auxiliary hydraulic flow		GPM (ℓ/min)	7.4 (27.7)	
	Max. breakout force	Bucket / Arm	lbs. (kgf)	3594 (1630) / 1852 (840)	
Drive system	Travel speed	Low / High	mph (km/h)	1.4 (2.2) / 2.5 (4.0)	
	Max. traction force		lbs. (kgf)	4542 (2060)	
	Tumbler distance		ft. in. (mm)	4'1" (1230)	
	Crawler length		ft. in. (mm)	5'2.6" (1590)	
	Shoe width		in. (mm)	9.1" (230)	
	Ground contact pressure		psi (kgf/cm ²)	3.7 (0.26) / 3.8 (0.27)	
	Unit swing speed		rpm	9.1	
Boom swing angle		Left / Right	degree	75 / 60	
Blade	Dimensions	Width	ft. in. (mm)	4'3.2" (1300) / 3'3.0" (990)	
		Height	in. (mm)	9.1" (230)	
	Max. lift above ground		in. (mm)	9.1" (230)	
	Max. drop below ground		in. (mm)	9.1" (230)	
Hydraulic oil (reservoir / system)			gal (ℓ)	4.1 (15.5) / 7.4 (28)	
Fuel reservoir			gal (ℓ)	5.6 (21)	
Operating weight (Including operator's weight 175 lbs.)			lbs. (kgf)	3748 (1700) / 3968 (1800)	

* OPG (Top Guard Level I) in accordance with ISO10262 is equivalent in definition to FOPS (Falling Object Protective Structure).

The company reserves the right to change the above specifications without notice. This brochure is for descriptive purposes only. Please contact your local Kubota dealer for warranty information.

For your safety, Kubota strongly recommends the use of a Rollover Protective Structure (ROPS) and seat belt for almost all applications.

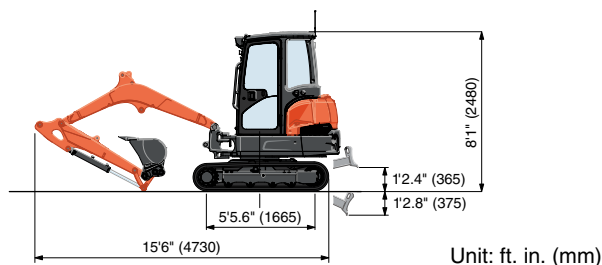
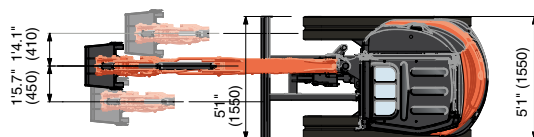
DIMENSIONS



SPECIFICATIONS

Model				KX033-4		KX033-4 Angle Blade			
Type of ROPS / OPG (TOP Guard, Level I)				Canopy / Cab					
Type of tracks				Rubber / Steel					
Engine	Model			Kubota D1703M-DI-E4					
	Output (SAE J1995 gross)		HP (kW) / rpm	24.8 (18.5) / 2200					
	Output (SAE J1349 net)		HP (kW) / rpm	23.2 (17.3) / 2200					
	Displacement		cu. in. (cc)	100.5 (1647)					
Dimensions	Overall length		ft. in. (mm)	15'6" (4730)					
	Overall height		ft. in. (mm)	8'1" (2480) / 8'1" (2470)					
	Overall width		ft. in. (mm)	5'1" (1550)					
	Min. ground clearance		in. (mm)	11.4 (290)					
	Boom offset	Right / Left	ft. in. (mm)	1'4.1" (410) / 1'5.7" (450)					
	Blade lift	Upper / Low	ft. in. (mm)	1'2.4" (365) / 1'2.8" (375)					
	Hydraulic system	Pump capacity		GPM (ℓ/min)	10.5 (39.6) x 2 / 5.5 (20.9) x 1				
Auxiliary hydraulic flow		GPM (ℓ/min)	15.8 (60)						
Max. breakout force		Bucket / Arm	lbs. (kgf)	8138 (3694) / 3867 (1756)					
Drive system	Travel speed		Low / High	mph (km/h)		1.9 (3.0) / 2.9 (4.6)			
	Max. traction force		Low speed	lbs. (kgf)		6091 (2763)			
	Tumbler distance		ft. in. (mm)		5'5.6" (1665)				
	Crawler length		ft. in. (mm)		6'10.6" (2100)				
	Shoe width	Rubber / Steel	in. (mm)		11.8 (300)				
	Ground contact pressure	Canopy	Rubber / Steel	psi (kgf/cm²)	4.365 (0.307) / 4.482 (0.315)		4.583 (0.322) / 4.700 (0.331)		
		Cab	Rubber / Steel	psi (kgf/cm²)	4.559 (0.321) / 4.676 (0.329)		4.776 (0.336) / 4.894 (0.344)		
Swing system	Unit swing speed		rpm		8.9				
	Boom swing angle	Left / Right	degree		70 / 48				
Blade	Dimensions	Width	ft. in. (mm)		5'1" (1550)				
		Height	ft. in. (mm)		1'1.5" (345)		1'3.2" (385)		
	Max. lift above ground		in. (mm)		14.4 (365)		15.9 (405)		
	Max. drop below ground		in. (mm)		14.8 (375)		18.9 (480)		
	Angle	Left / Right	degree		-		25 / 25		
Hydraulic oil (Reservoir / System)			gal (ℓ)		11.8 (44.6) / 16.1 (61)				
Fuel reservoir			gal (ℓ)		12.4 (46.9)				
Operating weight (Including operator's weight @ 175 lbs.)		Canopy	Rubber / Steel	lbs. (kgf)		7420 (3365) / 7616 (3454)		7781 (3529) / 7978 (3618)	
		Cab	Rubber / Steel	lbs. (kgf)		7742 (3511) / 7938 (3600)		8104 (3675) / 8300 (3764)	

DIMENSIONS



Unit: ft. in. (mm)

Kubota Tractor Corporation reserves the right to change the stated specifications without notice. This brochure is for descriptive purposes only and reasonable efforts were used to set forth the contained information; some items shown may be optional and some products shown may not be available at all dealerships. Kubota disclaims all representations and warranties, express or implied, or any liability from the use of this brochure. For complete warranty, safety and product information, consult your local Kubota dealer and the operator's manual. Power (HP/KW) and other specifications are based on various standards or recommended practices. For your safety, Kubota strongly recommends the use of a Rollover Protective Structure (ROPS) and seat belt in almost all applications. This brochure is intended for the United States and US territories only. For information regarding Kubota products or services outside these areas, see Kubota Corporation's global web site. Kubota does not provide parts, warranty or service for any Product which is re-sold or retailed in any country other than the country for which the Product(s) were designed or manufactured.

©2016 Kubota Corporation



KUBOTA TRACTOR CORPORATION

Kubota Tractor Corporation, 3401 Del Amo Boulevard, Torrance CA 90503
 Western Division: 1175 S. Guild Ave., Lodi, CA 95240 Tel (209) 334-9910
 Central Division: 14855 FAA Boulevard, Fort Worth, TX 76155 Tel (817) 571-0900
 Northern Division: 6300 at One Kubota Way, Groveport, OH 43125 Tel (614) 835-1100
 Southeast Division: 1025 Northbrook Parkway, Suwanee, GA 30024 Tel (770) 995-8855

Visit our web site at: www.kubota.com



KX040-4

		Canopy / Cab		
		Rubber / Steel		
		Kubota D1803-CR-TE4		
		4		

* OPG (Top Guard Level II) in accordance with ISO10262 is equivalent in definition to FOPS (Falling Object Protective Structure).
The company reserves the right to change the above specifications without notice. This brochure is for descriptive purposes only. Please contact your local Kubota dealer for warranty information.
For your safety, Kubota strongly recommends the use of a Rollover Protective Structure (ROPS) and seat belt for almost all applications.

DIMENSIONS



KX057-4



SPECIFICATIONS

Specifications

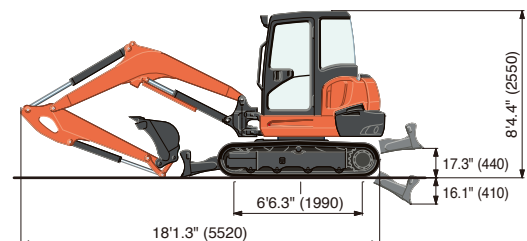
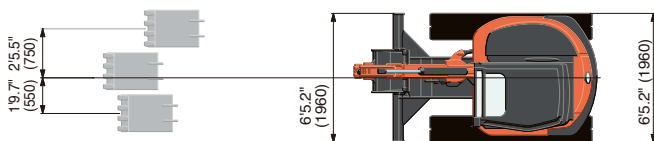
Model				KX057-4		KX057-4 Angle Blade		
Type of ROPS / OPG (Top Guard Level I)*				Canopy / Cab				
Type of tracks				Rubber		Rubber / Steel		
Engine	Model			Kubota V2607-CR-E4				
	Output (SAE J1995 gross)		HP (kW)/rpm	47.6 (35.5) / 2200				
	Output (SAE J1349 net)		HP (kW)/rpm	45.2 (33.7) / 2200				
	Displacement		cu.in. (cc)	159.6 (2615)				
Dimensions	Overall length		ft.in. (mm)	18'1.3" (5520)				
	Overall height		ft.in. (mm)	8'4.4" (2550)				
	Overall width		ft.in. (mm)	6'5.2"(1960)				
	Min. ground clearance		in. (mm)	1'0.2"(310)				
Hydraulic system	Pump capacity		gpm. (ℓ /min)	14.8 (56.1) Variable x 2 / 9.8 (37.0) Gear x 1				
	Auxiliary hydraulic flow	AUX1 / AUX2	gpm. (ℓ /min)	19.8 (75) / 9.8 (37)				
	Max. breakout force	Bucket / Arm	lbs. (kgf)	11177 (5070) / 5644 (2560)				
Drive system	Travel speed		Low / High	mph (km/h)	1.8 / 3.1 (2.8 / 4.9)			
	Max. traction force		Low speed	lbs. (kgf)	14480 (6567)			
	Tumbler distance			ft.in. (mm)	6'6.3" (1990)			
	Crawler length			ft.in. (mm)	8'2.4" (2500)			
	Shoe width		Rubber / Steel	ft. in. (mm)	1'3.7" (400)			
	Ground contact pressure		Rubber Canopy / Cab	psi (kgf/cm ²)	4.54 (0.319) / 4.62 (0.325)		4.69 (0.330) / 4.78 (0.338)	
			Steel Canopy / Cab	psi (kgf/cm ²)	-		4.78 (0.336) / 4.85 (0.341)	
Swing system	Unit swing speed			rpm	9.3			
	Boom swing angle		Left / Right	degree	70 / 55			
Blade	Dimensions		Width	ft. in. (mm)	6'5.2"(1960)			
			Height	ft. in. (mm)	1'4.1" (410)		1'4.7" (425)	
	Max. lift above ground			in. (mm)	17.3" (440)		20.0" (510)	
	Max. drop below ground			in. (mm)	16.1" (410)		18.3" (465)	
	Angle		Left / Right	degree	-		25	
Hydraulic oil (Reservoir/System)				gal (ℓ)	11.9 (45) / 20.9 (79)			
Fuel reservoir				gal (ℓ)	19.8 (75)			
Operating weight		Rubber Canopy / Cab	lbs. (kgf)	12200 (5535) / 12400 (5625)		12620 (5725) / 12820 (5815)		
(Including operator's weight @ 175 lbs.)		Steel Canopy / Cab	lbs. (kgf)	-		12840 (5825) / 13040 (5915)		

* OPG (Top Guard Level I) in accordance with ISO10262 is equivalent in definition to FOPS (Falling Object Protective Structure).

The company reserves the right to change the above specifications without notice. This brochure is for descriptive purposes only. Please contact your local Kubota dealer for warranty information.

For your safety, Kubota strongly recommends the use of a Rollover Protective Structure (ROPS) and seat belt for almost all applications.

DIMENSIONS



KX Series

Specifications

KX080-4

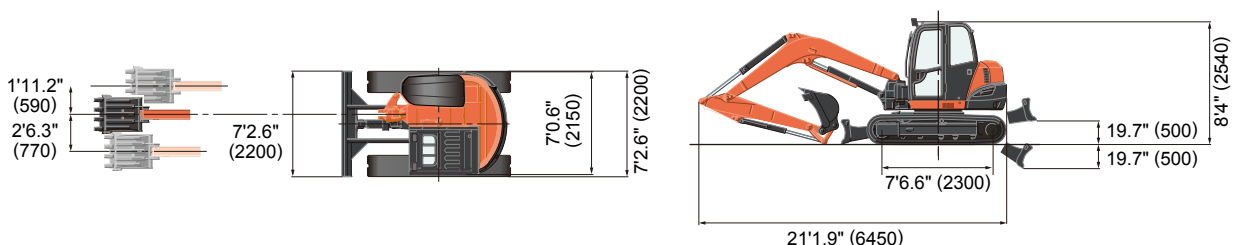


Model				KX080-4	KX080-4 Angle Blade	
Type of cabin				ROPS / OPG(Top Guard, Level I)		
Type of tracks				Rubber / Steel		
Engine	Model			Kubota V3307-CR-TE4		
	Output (SAE J1995 gross)		HP (kW)/rpm	66.6 (49.7) / 2000		
	Output (SAE J1349 net)		HP (kW)/rpm	62.3 (46.5) / 2000		
	Displacement		cu. in. (cc)	203.3 (3331)		
Dimensions	Overall length		ft. in. (mm)	21'1.9" (6450)		
	Overall height		ft. in. (mm)	8'4" (2540)		
	Overall width		ft. in. (mm)	7'2.6" (2200)		
	Min. ground clearance		in. (mm)	15.4" (390)		
Hydraulic system	Pump capacity		GPM (ℓ/min)	19.0 (72.0) Variable × 2 / 17.6 (66.6) Gear ×1		
	Auxiliary hydraulic flow		GPM (ℓ/min)	26.4 (100) / 17.6 (66.6)		
	Max. breakout force	Bucket / Arm	lbf. (kgf)	14660 (6650) / 8554 (3880)		
Drive system	Travel speed	Low / High	mph (km/h)	1.7 (2.7) / 3.1(4.9)		
	Max. traction force	Low speed	lbf. (kgf)	14615 (6630)		
	Tumbler distance		ft. in. (mm)	7'6.6" (2300)		
	Crawler length		ft. in. (mm)	9'6.2" (2900)		
	Shoe width	Rubber / Steel	in. (mm)	17.7" (450) / 17.7" (450)		
	Ground contact pressure	Rubber / Steel	psi (kgf/cm²)	5.23 (0.367) / 5.35 (0.376)		5.47 (0.385) / 5.60 (0.394)
Swing system	Unit swing speed		rpm	9.5		
	Boom swing angle	Left / Right	degree	70 / 60		
Blade	Dimensions	Width	ft. in. (mm)	7'2.6" (2200)		
		Height	ft. in. (mm)	1'7.7" (500)		1'8.1" (510)
	Max. lift above ground		in. (mm)	19.7" (500)		22.8" (580)
	Max. drop below ground		in. (mm)	19.7" (500)		25.2" (640)
	Angle		degree	—		25
Hydraulic oil (reservoir / system)			gal (ℓ)	19.8 (75) / 35.7 (135)		
Fuel reservoir			gal (ℓ)	30.4 (115)		
Operating weight (Including operator's weight @ 175 lbs.)		Rubber / Steel	lbs. (kg)	18280 (8290) / 18390 (8340)		19140 (8680) / 19250 (8730)

* OPG (Top Guard Level I) in accordance with ISO10262 is equivalent in definition to FOPS (Falling Object Protective Structure).

The company reserves the right to change the above specifications without notice. This brochure is for descriptive purposes only. Please contact your local Kubota dealer for warranty information. For your safety, Kubota strongly recommends the use of a Rollover Protective Structure (ROPS) and seat belt for almost all applications.

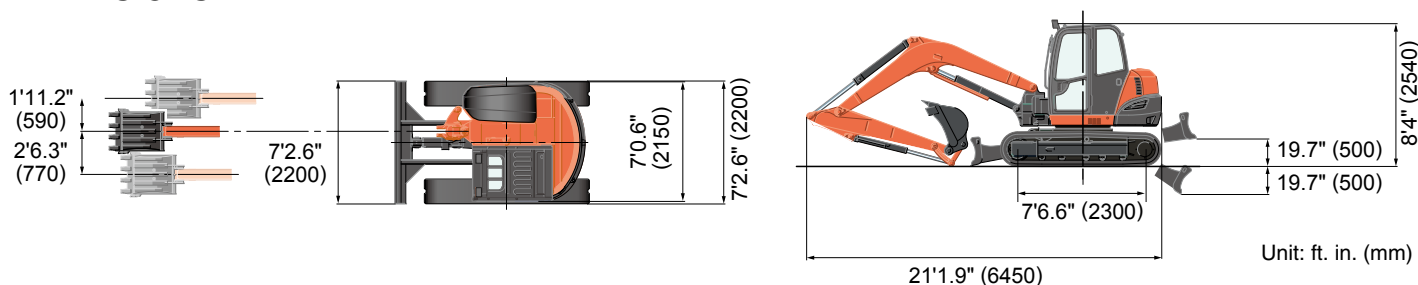
DIMENSIONS



SPECIFICATIONS

Model				KX080-4S		KX080-4S Angle Blade		
Type of cabin				ROPS / OPG (TOP Guard, Level I)				
Type of tracks				Rubber / Steel				
Engine	Model			Kubota V3307-CR-TE4				
	Output (SAE J1995 gross)		HP (kW)/rpm	66.6 (49.7) / 2000				
	Output (SAE J1349 net)		HP (kW)/rpm	62.3 (46.5) / 2000				
	Displacement		cu. in. (cc)	203.3 (3331)				
Dimensions	Overall length		ft. in. (mm)	21'1.9" (6450)				
	Overall height		ft. in. (mm)	8'4" (2540)				
	Overall width		ft. in. (mm)	7'2.6" (2200)				
	Min. ground clearance		in. (mm)	14.0 (355)				
Hydraulic system	Pump capacity		GPM (ℓ/min)	22.3 (84.6) Variable × 2				
	Auxiliary hydraulic flow		GPM (ℓ/min)	26.4 (100) / 17.6 (66.6)				
	Max. breakout force	Bucket / Arm	lbf. (kgf)	14660 (6650) / 8554 (3880)				
Drive system	Travel speed		Low / High	mph (km/h)	1.7 (2.7) / 3.0 (4.8)			
	Max. traction force		Low speed	lbf. (kgf)	14878 (6750)			
	Tumbler distance		ft. in. (mm)		7'6.6" (2300)			
	Crawler length		ft. in. (mm)		9'6.2" (2900)			
	Shoe width		Rubber / Steel	in. (mm)	17.7" (450) / 17.7" (450) (opt. 24" (610))			
	Ground contact pressure		Rubber / Steel	psi (kgf/cm ²)	5.25 (0.369) / 5.36 (0.378)		5.49 (0.386) / 5.63 (0.396)	
Swing system	Unit swing speed			rpm	10.2			
	Boom swing angle		Left / Right	degree	70 / 60			
Blade	Dimensions		Width	ft. in. (mm)	7'2.6" (2200)			
			Height	ft. in. (mm)	1'7.7" (500)		1'8.1" (510)	
	Max. lift above ground			in. (mm)	19.7" (500)		22.8" (580)	
	Max. drop below ground			in. (mm)	19.7" (500)		25.2" (640)	
	Angle			degree	—		25	
Hydraulic oil (reservoir / system)				gal (ℓ)	19.8 (75) / 35.7 (135)			
Fuel reservoir				gal (ℓ)	30.4 (115)			
Operating weight (Including operator's weight @ 165 lbs.)		Rubber / Steel		lbs. (kg)	18365 (8330) / 18475 (8380)		19225 (8720) / 19335 (8770)	

DIMENSIONS



Kubota Tractor Corporation reserves the right to change the stated specifications without notice. This brochure is for descriptive purposes only and reasonable efforts were used to set forth the contained information; some items shown may be optional and some products shown may not be available at all dealerships. Kubota disclaims all representations and warranties, express or implied, or any liability from the use of this brochure. For complete warranty, safety and product information, consult your local Kubota dealer and the operator's manual. Power (HP/KW) and other specifications are based on various standards or recommended practices. For your safety, Kubota strongly recommends the use of a Rollover Protective Structure (ROPS) and seat belt in almost all applications. This brochure is intended for the United States and US territories only. For information regarding Kubota products or services outside these areas, see Kubota Corporation's global web site. Kubota does not provide parts, warranty or service for any Product which is re-sold or retailed in any country other than the country for which the Product(s) were designed or manufactured.

©2016 Kubota Corporation



KUBOTA TRACTOR CORPORATION

Kubota Tractor Corporation, 3401 Del Amo Boulevard, Torrance CA 90503
 Western Division: 1175 S. Guild Ave., Lodi, CA 95240 Tel (209) 334-9910
 Central Division: 14855 FAA Boulevard, Fort Worth, TX 76155 Tel (817) 571-0900
 Northern Division: 6300 at One Kubota Way, Groveport, OH 43125 Tel (614) 835-1100
 Southeast Division: 1025 Northbrook Parkway, Suwanee, GA 30024 Tel (770) 995-8855

Visit our web site at: www.kubota.com

